



## 86 Madeira Road

, Portsmouth, PO2 0SY

**Guide price £350,000**

3 Bedroom Family Home | Kitchen Diner | Good Size Garden  
| Fitted Wardrobes | Spacious Rooms | Downstairs WC |  
Upstairs Bathroom | Good Location | Perfect for Families |  
Ideal for Investment | **\*\*Chain Free\*\***

- 3 Bedroom Family Home
- Kitchen Diner
- Good Size Garden
- Fitted Wardrobes
- Chain Free
- Downstairs WC
- Upstairs Bathroom
- Good Location
- Perfect for Families
- Ideal for Investment

Viewing

Please contact our ROK Marsh Office on 02393233267  
if you wish to arrange a viewing appointment for this property or  
require further information.



3



1



2

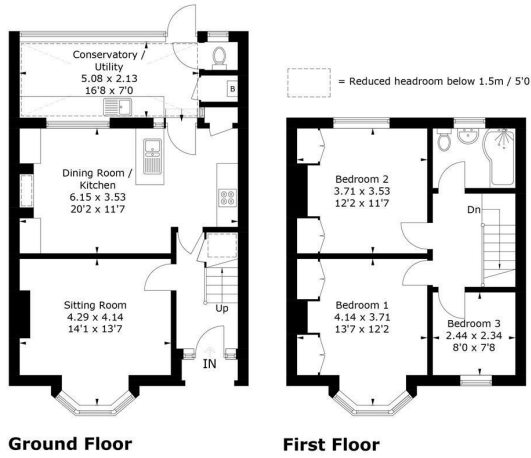


C

# Floor Plan

## Madeira Road, PO2 0SY

Approximate Gross Internal Area = 103.6 sq m / 1115 sq ft

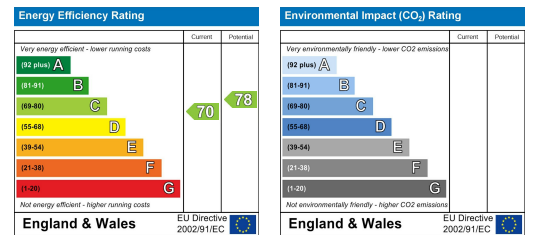


PRODUCED FOR ROK MARSH  
 Whilst every attempt has been made to ensure the accuracy of the floorplan, measurements of doors, windows and rooms are approximate. These plans are for representation purposes only as defined by RICS Code of Measuring Practice and used as such by any prospective purchaser. (ID1289431)

# Area Map



# Energy Efficiency Graph



These particulars, whilst believed to be accurate are set out as a general outline only for guidance and do not constitute any part of an offer or contract. Intending purchasers should not rely on them as statements of representation of fact, but must satisfy themselves by inspection or otherwise as to their accuracy. No person in this firm's employment has the authority to make or give any representation or warranty in respect of the property.